

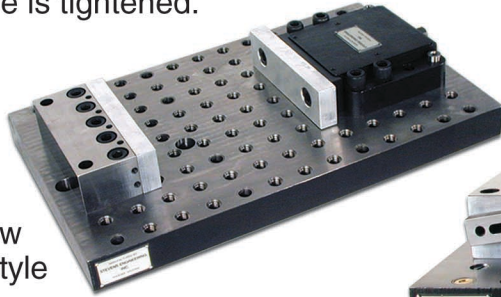
STEVENS

Modular Vise Model 626

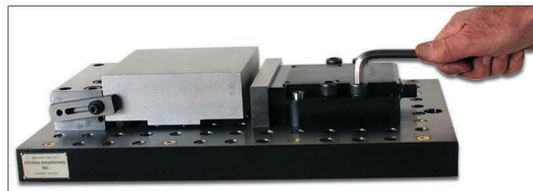
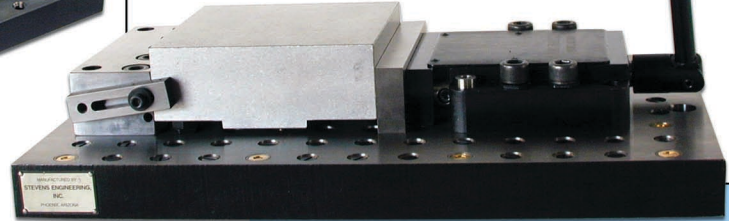
P/N 20210

A pull-down mechanism prevents the work from rising as the vise is tightened.

The faces of the fixed and movable jaw assemblies are designed to allow mounting Kurt style soft jaws.



Designed for use on Stevens grid patterns, the separate fixed and movable jaw assemblies may be positioned at any desired interval allowing a wide range of workpiece lengths to be held.



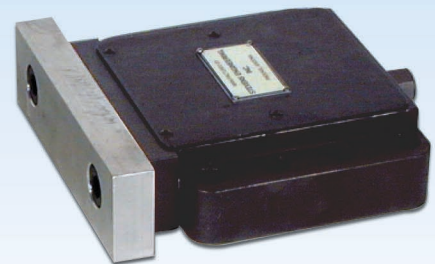
The vise is furnished with a hardened movable jaw plate. The fixed jaw is already fully hardened.

Pull dowels inserted through bushed holes in the fixed jaw and into corresponding holes below align the jaw face parallel to X, Y, or Z machine axes. When several vises are mounted, the fixed jaw faces will lie in the same plane.

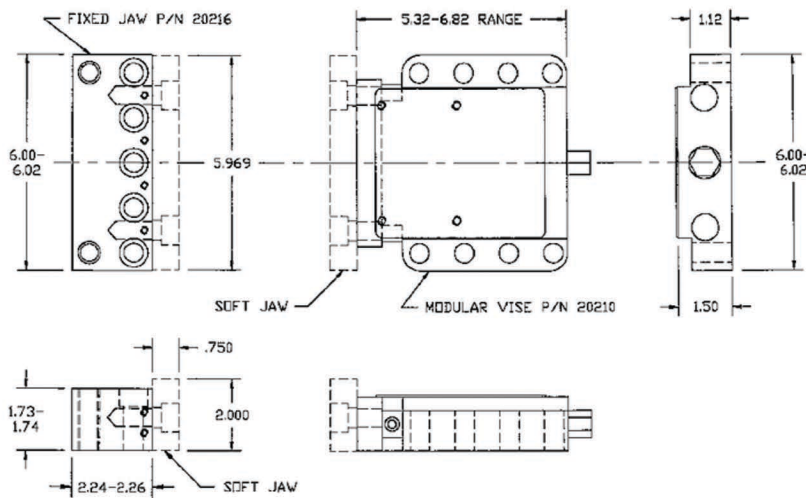


626 Vise Features

- Compact design makes handling easy and setup quick.
- Use of high strength materials assures durability under heavy use and retention of accuracy over years of service.
- Included with the Model 626 Vise are the fixed jaw, the movable jaw assembly, hinge handle, work stop, mounting hardware, and an instruction sheet.



- The movable jaw assembly may be ordered separately.
- Stevens rest pads and shim sets are used to elevate the work to the desired height. Consult our website for details.



STEVENS ENGINEERING, INC.

3946 W. Clarendon Avenue, Phoenix, AZ 85019 • 800.635.0657 • 602.272.6766 • Fax 602.272.0717 • www.stevenseng.com

000000000000